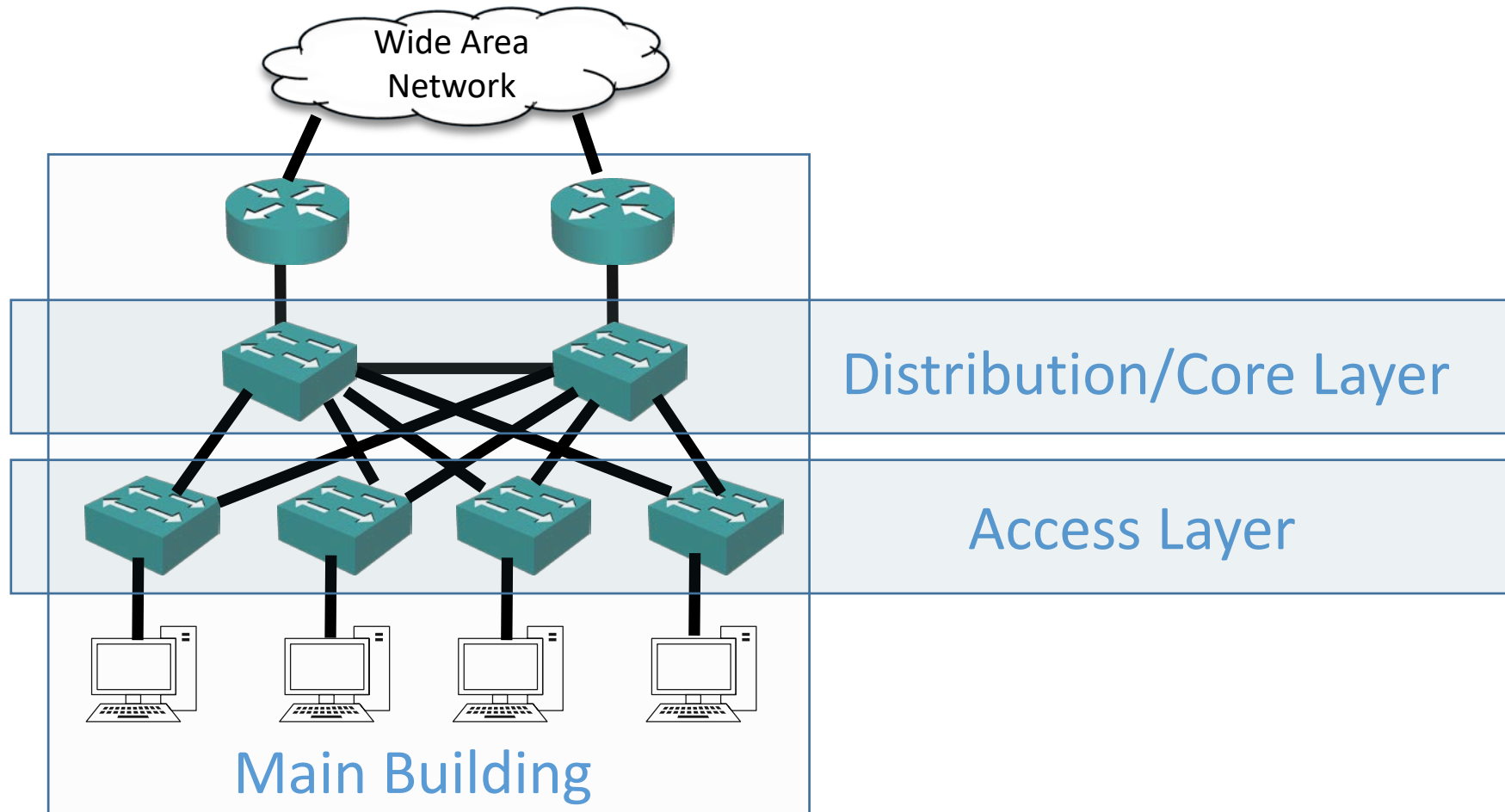


LAN, WAN and MAN Definitions

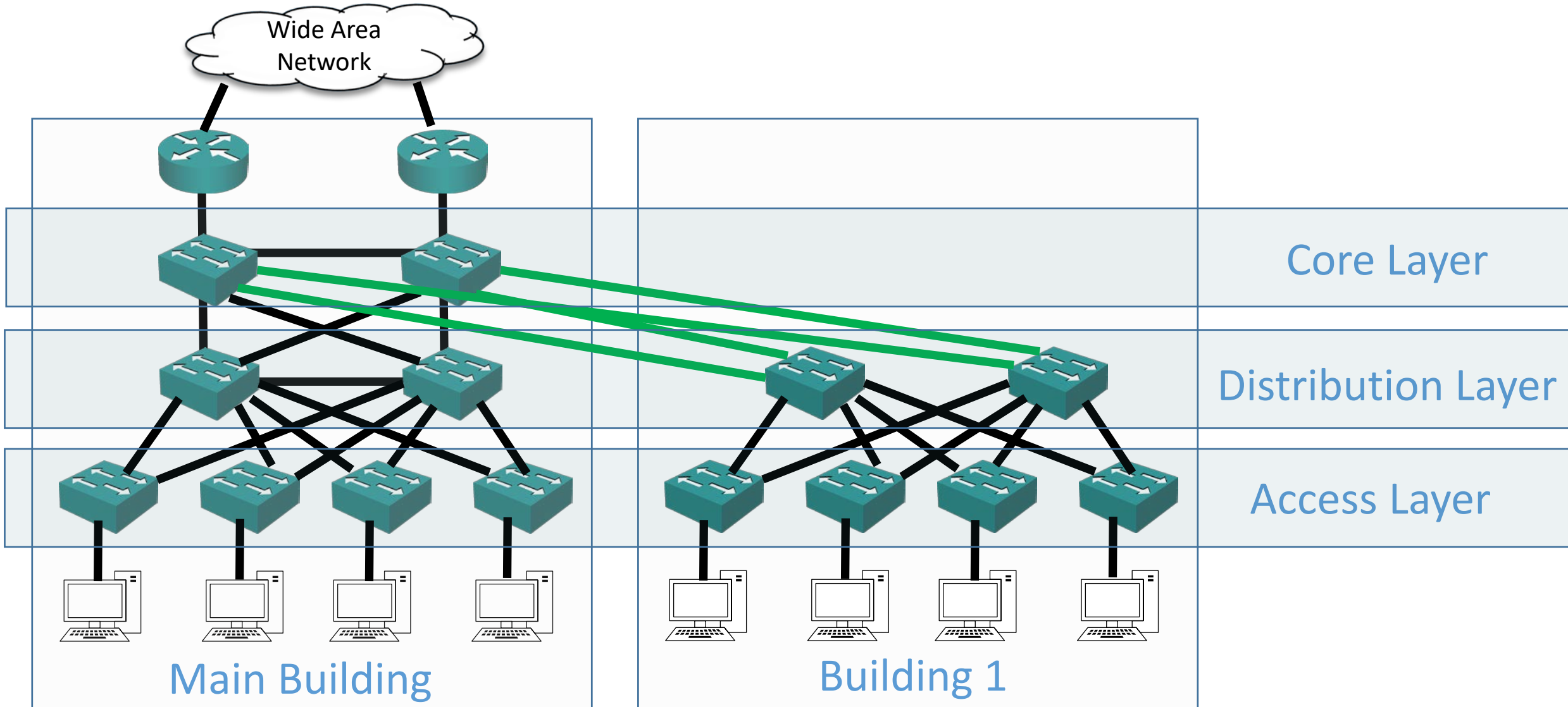


- A **Local Area Network (LAN)** is a network that connects computers and other devices in a relatively small area, typically a single building or a group of buildings.
- A **Wide Area Network (WAN)** is a geographically distributed network that connects multiple Local Area Networks together.
- A **Metropolitan Area Network (MAN)** is a network that connects computers and other devices in a geographic area larger than a LAN but smaller than a WAN.

LAN Design - Collapsed Distribution and Core



Campus Design - Core Layer



Wide Area Networks

